

Eastside Projects Visitor's Access Guide

Hello and welcome!

We have written this guide to help make your visit to Eastside Projects as relaxed and easy as possible. We hope it covers what you will need to know, but you are also very welcome to contact us to discuss your access needs or ask any other questions - you can email us on info@eastsideprojects.org, call us on 0121 771 1778 or speak to a member of staff in the gallery.

Where are we?

Eastside Projects is at 86 Heath Mill Lane, next door to the Central Taxi Repair Garage. Our building looks like this:



The large posters which are pasted on the front of the building change with every exhibition, but you will always find our Code of Conduct pasted by the door which we ask everyone to read before they enter. You can read it [HERE](#).

When are we open?

The gallery is open Wednesdays to Saturdays, 12–5pm. We will be closed if we are installing new exhibitions, so it is always a good idea to check before you visit. All our exhibitions are free.

The easiest way to find out if we are open is to visit the [Public Projects](#) section of our website, this is where we post information about our exhibitions. You will also find exhibition dates and opening times on the main door and on the large posters on the front of the building. Alternatively you can email us on info@eastsideprojects.org, or call us on 0121 771 1778 to check.

You can book a slot to visit an exhibition on our website. To maintain social distancing and keep everyone safe we limit the number of visitors in the gallery to ten. You can drop in, but if we are fully booked you will have to wait until there is a slot available.

Sometimes we are also open at other times for special events. You can find out what is on, and whether you need to book by visiting the [Events](#) page of our website.

How do you get to Eastside Projects?

Eastside Projects is in Digbeth in Birmingham City Centre, close to the Custard Factory. You will find a link to a google map, a walking guide from New street Station, and information on bus connections and parking on the [Visit](#) page of our website. Buses in Birmingham are accessible to wheelchair users.

How do you get into the building?

There are two glass doors on the front of our building. The gallery entrance is the door on the right which is set back about 90cm from the street.

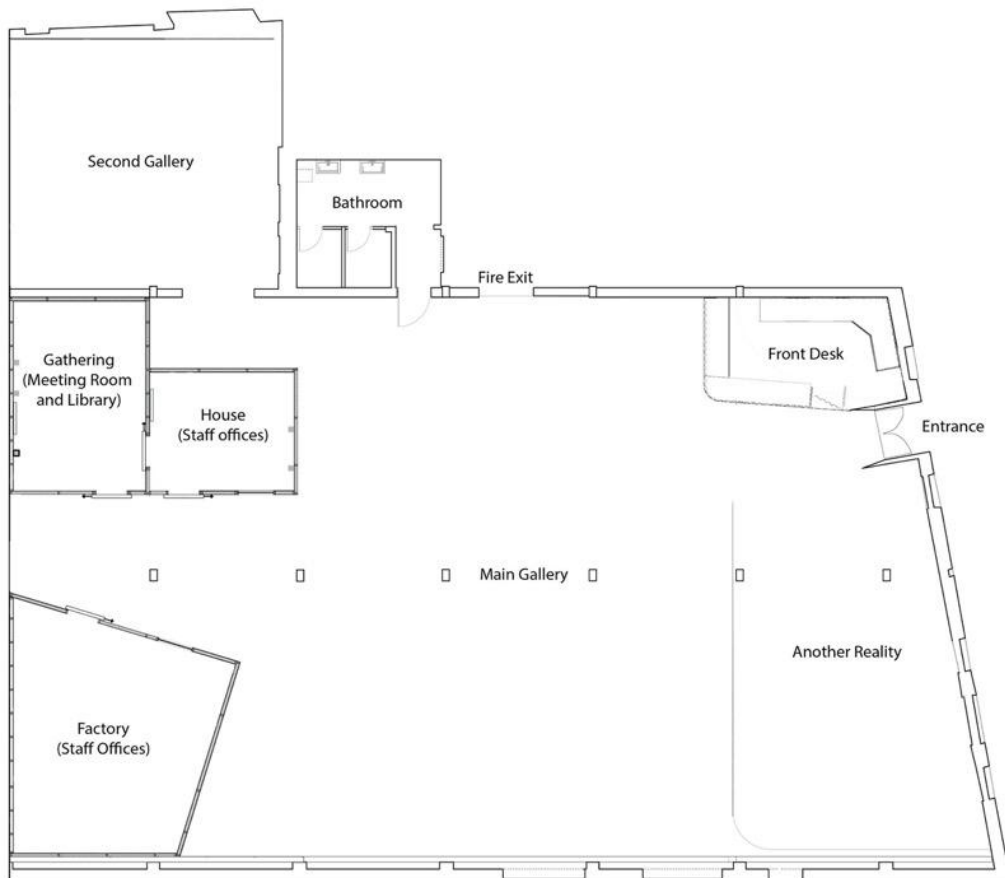
There is a small step into the porch. We have a wheelchair ramp inside the building so if you need any assistance, please just press the buzzer, which you will find on the wall on the right, and a member of staff will come and help. Once you are inside the gallery there are no more steps.

The door will be unlocked if the gallery is open so you can just come straight in. If the gallery is closed it will be locked, but if the shutter is up people will be working inside, so if you have a question or would like to talk to someone just press the buzzer and a member of staff will come to the door to help.

What is it like inside?

To get a good sense of the building before you visit we suggest you take a look at our [Virtual Tours](#). We refitted the building in 2018 and *Migrating Flavours* was the first exhibition in the space as it is now.

To help you orientate yourself here is a floor plan.



Eastside Projects is in an industrial warehouse, so you walk straight into a large, airy room with a high ceiling. This is the **Main Gallery**. It is lit by a mixture of fluorescent strip lights on the ceiling and LED spotlights. There may be natural light coming in from the front doors, as well as the skylights in the ceiling.

As you look forward, towards the back of the Main Gallery, you will see two smaller buildings. The one on the left is called **Factory**, and the one on the right is called **House/Gathering**. Our staff work in these spaces.

To the right of House/Gathering is a door into our **Second Gallery**.

On the same wall, between the second gallery and the front desk is the door to our **Bathroom**.

We have two toilets – one of them is wheelchair accessible. Below is a photograph of the bathroom and cubicle. If you have any questions, please just ask.



To your right, as you walk in, is the **Front Desk**.



A member of staff will be sitting behind the desk and will welcome you when you walk in. They will offer you information about the exhibition, answer any questions you have about your visit, and talk to you about the artworks and what we do at Eastside Projects.

We take it in turns to look after the front desk so you might meet Dinosaur, Jaz, Ruth, Zoe, Amelia, Gavin or Ashley. If you would like to know what we look like you will find photos at the end of this document. You can also find out more about us by visiting the [People](#) page on our website.

To keep everyone Covid Safe the person on the front desk will ask you to wear a mask when you are in the gallery, so please bring one with you. If you cannot wear a mask for medical reasons just let them know. They will also offer you hand sanitiser and will ask for your name and email address, or ask you to scan the QR code using the NHS Covid App. This is so we can track and trace gallery visitors.

Large print versions of our gallery guides are available on the front desk and we can also arrange for a member of staff to walk round the exhibition with you and give a guided audio tour. Additionally, we have audio versions of our exhibition guides on the [Stream](#) page of our website.

To your left, as you walk in, is an area we call **Another Reality** where we sometimes hold meetings and events. This space is divided from the Main Gallery by a large, grey curtain which is an artwork by Celine Condorelli. It also houses our bookshop. The space is lit by blue and yellow fluorescent tubes which hang vertically from the ceiling.



You'll usually see tables and chairs and a sofa in there and you are welcome to sit down, relax and take some quiet time if you would like to. If you visit between 1 and 2pm you will probably find us having our lunch!

What will you see?

We change our exhibitions three times each year so what you will see in the gallery changes regularly. We produce an access guide for each exhibition that describes the artworks that you will encounter. You will find these guides on the [Visit](#) page of our website and on each exhibition's [project page](#).

How can we help?

We want everyone to have a positive experience when they visit Eastside Projects, so if you have any other questions, or suggestions for how we could improve this guide or make the gallery more accessible, please email us on info@eastsideprojects.org, call us on 0121 771 1778 or speak to a member of staff in the gallery and we will be happy to help.

Eastside Projects Staff

RUTH



AMELIA



DINOSAUR



JAZ



ZOE



GAVIN



ANIA



TRIXIEBELLA



AL



ASHLEY



KATHY

